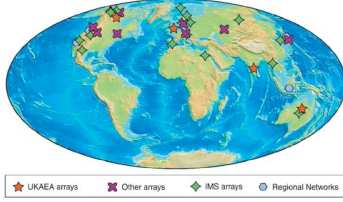


EAS 8803 - Obs Seismology

Lec#12: Array Analysis

- Dr. Zhigang Peng, Spring 2011



2/28/11

zpeng Seismology II

1

Last Time

- Stacking in exploration geophysics
- Stacking to obtain reliable deep Earth structure
- Stacking to estimate seismic source properties

2/28/11

zpeng Seismology II

2

This Time

- Data management and basic data processing tools
- Systematic and random errors
- Waveform stacking
- Array analysis

2/28/11

zpeng Seismology II

3

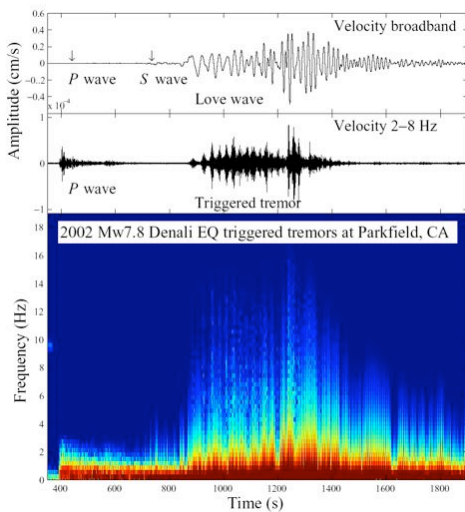
Array Analysis

- Introduction of array
- Basic array processing techniques
- Example of array processing techniques for Earth structures
- Example of array processing techniques for earthquake source properties

2/28/11

zpeng Seismology II

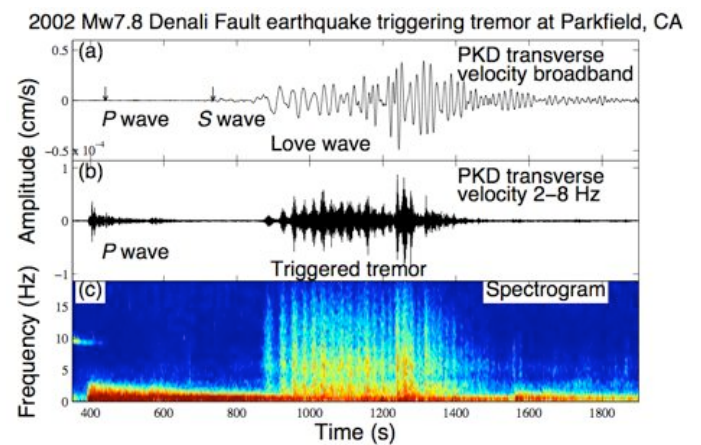
4



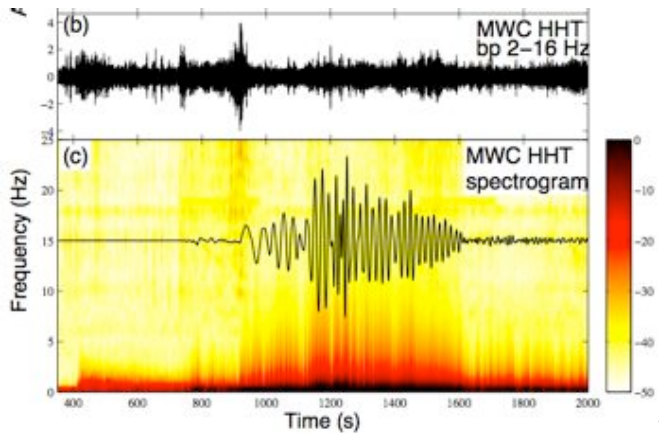
2/28/11

5

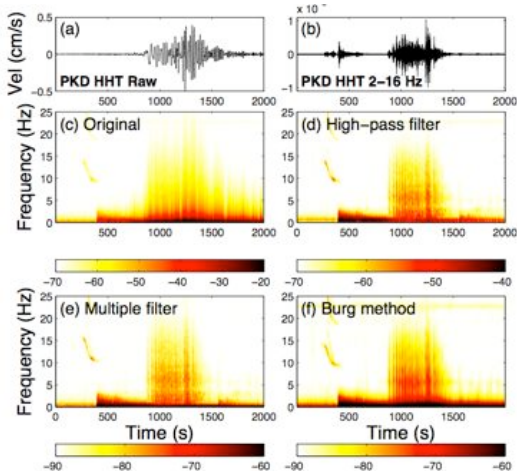
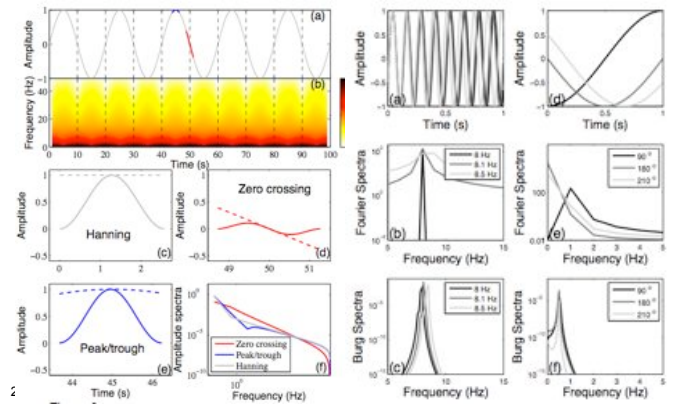
This is a better spectrogram that matches the band-pass-filtered data



Another example of artifact generated by the 'spectrogram' program



With short time windows, seismic waves with periods close or longer than the window length are not well resolved, and may introduce high-frequency artifacts (Peng et al., BSSA, 2011)



http://geophysics.eas.gatech.edu/people/zpeng/zpeng_paper/Peng_etal_BSSA_2011.pdf
2/28/11 zpeng Seismology II 9

Definition

- **Seismic array**: many uniform seismometers in a well-defined, closely-spaced configuration (*Rost and Thomas, Rev. Geophys., 2002*).
- *Rost and Garnero (EOS, 2004)* gave the following criteria for **seismic array**:
 - Three or more seismometers
 - An aperture of more than 1 and less than a few hundred kms
 - Uniform instrumentation and recording
 - A means of analysis of the data as an ensemble
 - A common time signal.

2/28/11

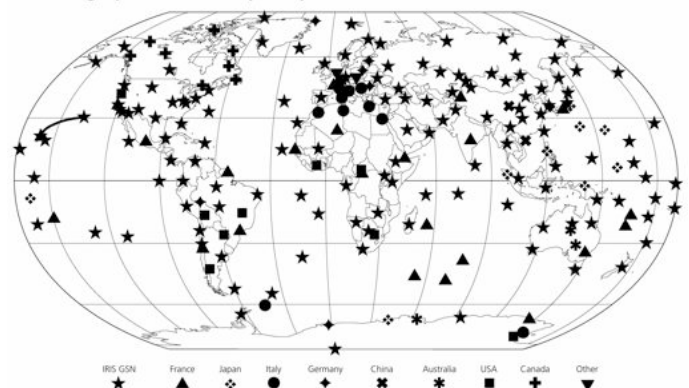
zpeng Seismology II

10

Definition

- Array processing techniques: methods of using the abilities of seismic arrays to measure the vector velocities of an incident wavefront, i.e., **slowness** and **back azimuth**.
- Difference between global and regional seismic network: more focused in the purpose, more strict in their configuration, and different analysis tools.

Figure 6.6-16: Station map of the Federation of Digital Broad-Band Seismographic Networks (FDSN).



2/28/11

zpeng Seismology II

12

2/28/11

zpeng Seismology II

11

Figure 6.6-18: Map of regional network seismometers in the continental USA.

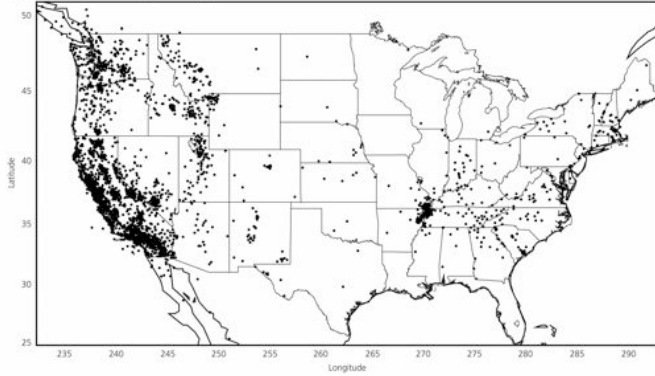
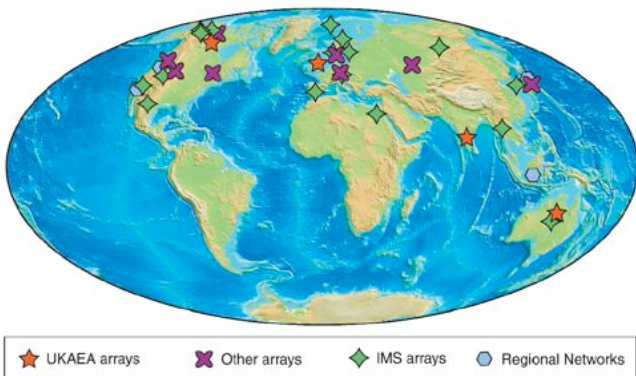
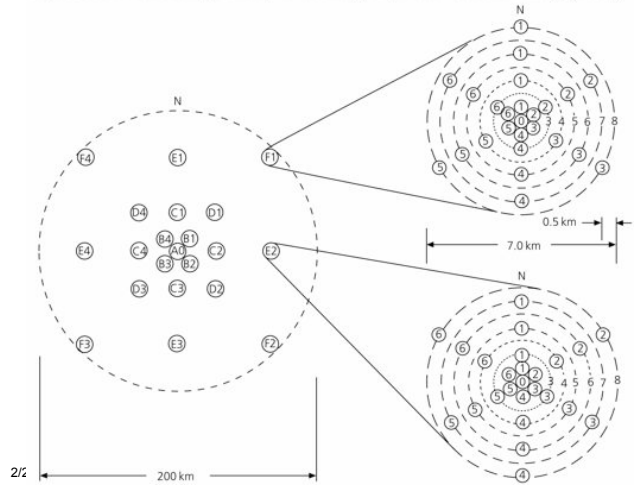


Figure 6.6-17: Station geometry of the Large Aperture Seismic Array (LASA).



Why should we use arrays?

- This information can be used to **distinguish between different seismic phases**, **separate waves** from different seismic events and **improve the signal-to-noise ratio** by stacking with respect to the varying slowness of different phases.
- The **vector velocity information of scattered or reflected phases** can be used to determine the region of the Earth from whence the seismic energy comes and with what structures it interacted.

Why should we use arrays?

- Therefore seismic arrays are perfectly suited to study the **fine-scale structure** and **spatio-temporal variations** of the material properties of the Earth's interior.
- Array analysis can also be used to better quantify the **seismic source mechanisms** (e.g., rupture duration, velocity, areas, etc), and **forensic seismology** (Nuke detection, terrorist attacks, etc).

Basics of Array Analysis (AA)

- Most array analysis methods assume a plane wave arriving at the array.
- This is a good approximation for teleseismic events.
- The propagation of an elastic waves can be described by two parameters:
 - Vertical incident angle i ,
 - Back azimuth θ .
- In practice, we often use the inverse of the apparent velocity of the wavefront $1/V_{app}$

$$u = \frac{1}{V_{app}} = \frac{\sin i}{V_0}$$

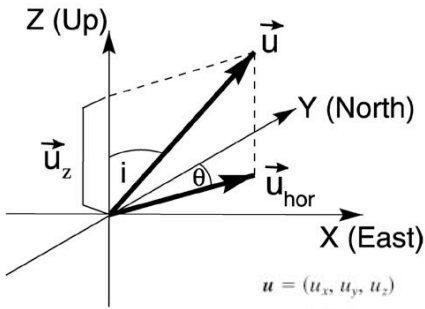
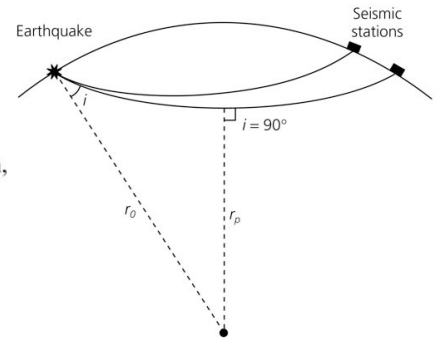


Figure 2. Components of the slowness incident angle i and back az are marked. The slowness vector is front.

$$\begin{aligned}
 \mathbf{u} &= (u_x, u_y, u_z) \\
 &= \left(\frac{\sin \theta}{v_{app}}, \frac{\cos \theta}{v_{app}}, \frac{1}{v_{app} \tan i} \right) \\
 &= u_{hor} \left(\sin \theta, \cos \theta, \frac{1}{\tan i} \right) \\
 &= \frac{1}{v_0} (\sin i \sin \theta, \sin i \cos \theta, \cos i). \quad (2)
 \end{aligned}$$

Figure 3.4-2: Geometry of a ray path in a spherical earth.



At the surface:

$$p = \frac{r_0}{v_0 \sin i} = r_0 u$$

At the bottoming depth,

$$r = r_p, \text{ and}$$

$$p = \frac{r_p}{v_p}$$

The slowness \mathbf{u} is a way to identify different phases traveling through the Earth's interior as it is unique to a given phase in a one-dimensional Earth.

Beam forming

- An important use of seismic arrays is the separation of coherent signals and noise. The basic method to separate coherent and incoherent parts of the recorded signal is **array beam forming**.
- Beam forming** uses the differential travel times of the plane wave front due to a specific slowness and back azimuth to individual array stations.
- If the single-station recordings are appropriately shifted in time for a certain back azimuth and slowness, all signals with the matching back azimuth and slowness will sum constructively.

Station Geometry

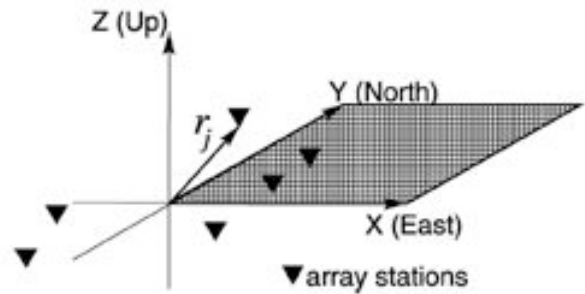


Figure 3. The definition of the sensor position vectors \mathbf{r}_j . The center of the array is assumed to be in the center of the Cartesian coordinate system.

Delay and Sum

The incident wavefield at the array center

$$x_{center}(t) = f(t) + n_i(t).$$

Station i with the location \mathbf{r}_i records the time series:

$$x_i(t) = f(t - \mathbf{r}_i \cdot \mathbf{u}_{hor}) + n_i(t)$$

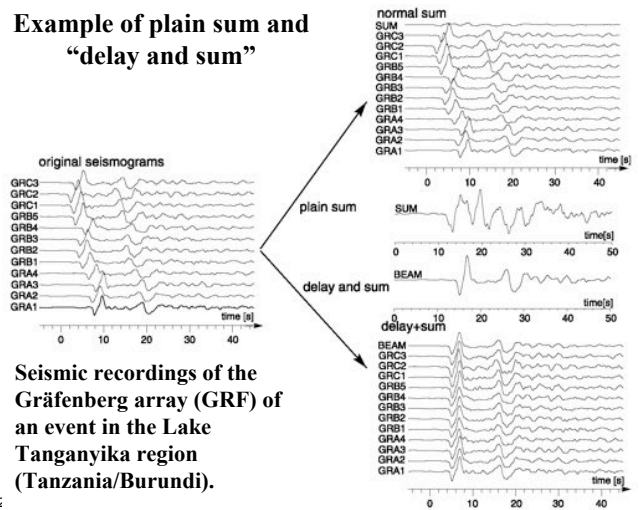
with \mathbf{r}_i representing the location vector of station i and \mathbf{u}_{hor} representing the horizontal slowness vector.

$$\tilde{x}_i(t) = x_i(t + \mathbf{r}_i \cdot \mathbf{u}_{hor}) = f(t) + n_i(t + \mathbf{r}_i \cdot \mathbf{u}_{hor}).$$

The "delay and sum" beam trace for an array with M components is then computed by

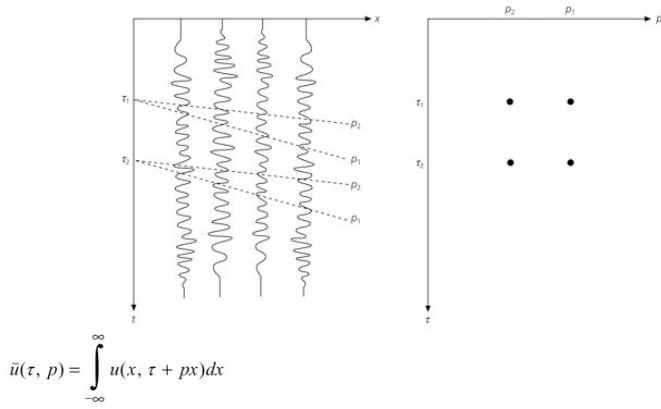
$$b(t) = \frac{1}{M} \sum_{i=1}^M \tilde{x}_i(t) = f(t) + \frac{1}{M} \sum_{i=1}^M n_i(t + \mathbf{r}_i \cdot \mathbf{u}_{hor}).$$

Example of plain sum and "delay and sum"



Seismic recordings of the Gräfenberg array (GRF) of an event in the Lake Tanganyika region (Tanzania/Burundi).

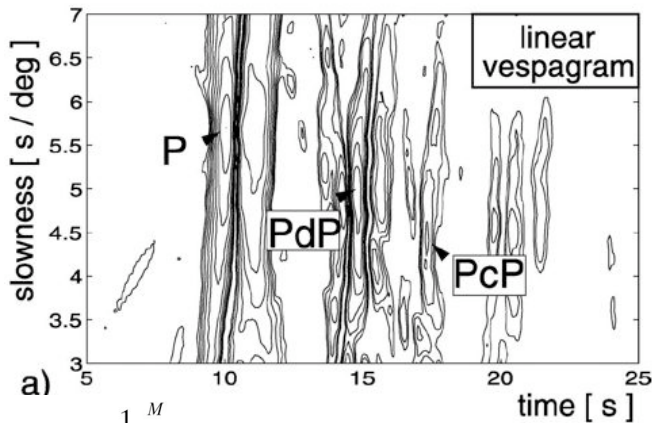
Figure 3.3-23: Illustration of slant stacking.



This integral (*slant stack*) maps all the data along each slanted line in (x, t) to a point in (τ, p) .

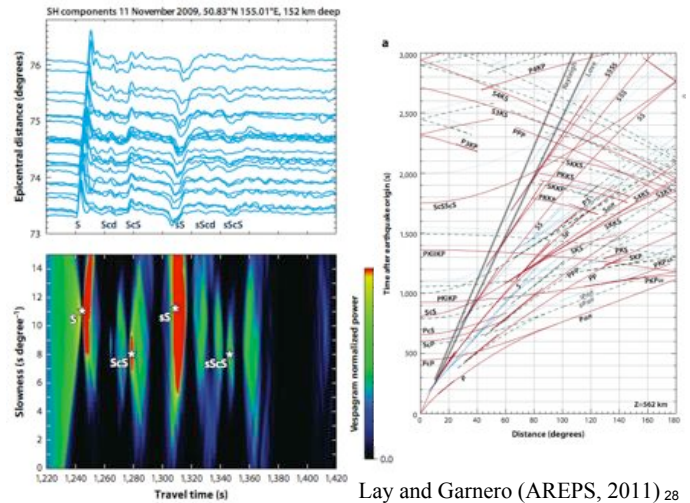
Vespa Process—Slant Stacks

- The **beam forming method** enhances the amplitude of a signal with a given slowness u .
- To determine the unknown horizontal slowness or the back azimuth of an arriving signal, the so-called **vespa process** (velocity spectral analysis [Davies *et al.*, 1971]) can be used.
- The **vespa** in its original form [Davies *et al.*, 1971] estimates the seismic energy arriving at the array for a given back azimuth and different horizontal slownesses u .
- Alternatively, the **vespa process** can be used for a fixed slowness and varying back azimuths.
- The result of the **vespa process** is displayed as a **vespagram**, a diagram of the energy content (amplitudes) of the incoming signals as a function of slowness or back azimuth and time.

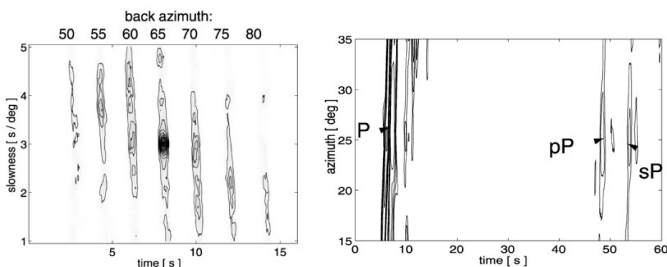


$$v_u(t) = \frac{1}{M} \sum_{i=1}^M x_i(t - t_{u,i}),$$

$$g = \frac{\pi \cdot 6371 \text{ km}}{180^\circ} \cong 111.91 \text{ km/}^\circ.$$

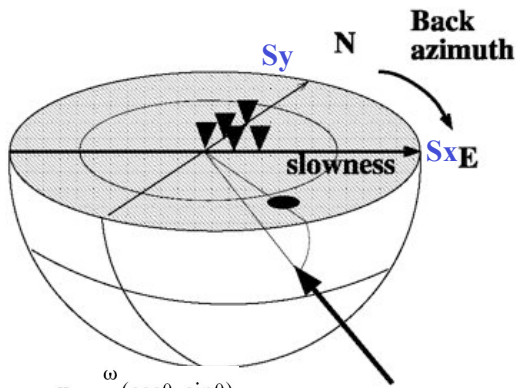


A wrong back azimuth (slowness) used for the computation may produce misleading slowness (back azimuth) measurements.



Frequency-wave number analysis

- In contrast to the array methods previously introduced, the **frequency-wave number analysis (fk analysis)** can measure the complete slowness vector (i.e., back azimuth θ and horizontal slowness u) simultaneously.
- A **grid search** for all u and θ combinations can be performed to find the best parameter combination, producing the highest amplitudes of the summed signal.



$$\mathbf{k} = (k_x, k_y) = \omega \cdot \mathbf{u} = \frac{\omega}{v_0} (\cos\theta, \sin\theta)$$

$$v_{app} = 1/u_{hor} = \frac{1}{\sqrt{s_x^2 + s_y^2}}$$

$$\theta = \tan^{-1}\left(\frac{s_x}{s_y}\right)$$

2/28/11

zpeng Seismology II

31

Three-component Array Processing Techniques

40, 3 / REVIEWS OF GEOPHYSICS

ROST AND THOMAS: ARRAY SEISMOL

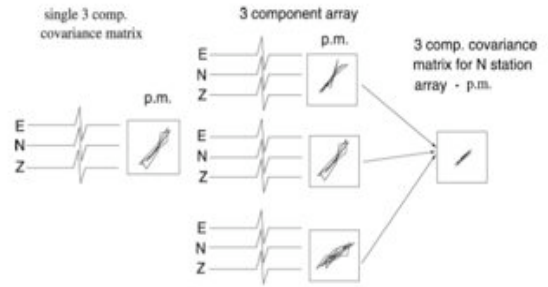


Figure 18. The principle using a three-component array for particle motion studies. For a single three-component station the covariance matrix describes the characteristics of the particle motion. For an array of three-component stations the mean of the covariance matrices of all stations is calculated. The resulting particle motion shows a smaller variance than the individual stations, and the characteristics of the motion as described in the text can be determined with smaller errors.

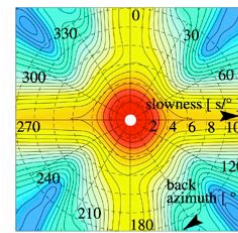
Array design principle

- Depending on the application of the array (detection, frequency of interest), their geometries vary significantly.
- Design principle:
 - The ARF should have a **sharp main lobe**, ideally a delta pulse with a strong suppression of the energy next to the main lobe.
 - The **sidelobes** due to spatial aliasing should not be within the wave number window of interest.
 - The **aperture** of the array affects the sharpness of the main lobe, i.e., the resolution of the array.
 - The **interstation spacing** defines the position of the sidelobes in the ARF and the largest resolvable wave number; that is, the smaller the interstation spacing, the larger the wavelength of a resolvable seismic phase will be.

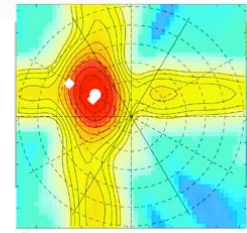
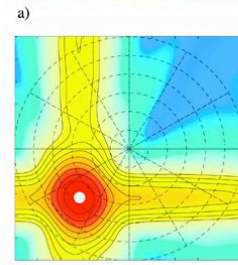
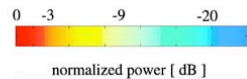
2/28/11

zpeng Seismology II

33



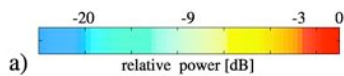
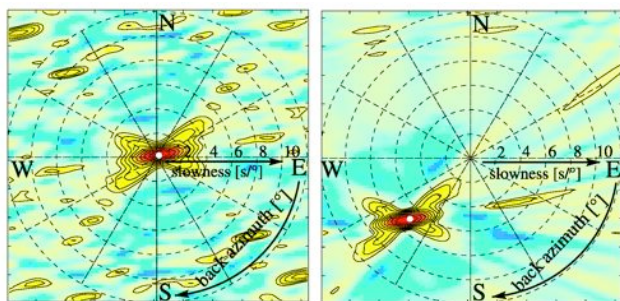
Array response function (ARF) of the small-aperture Yellowknife array (YKA) in northern Canada.



2/28/11

34

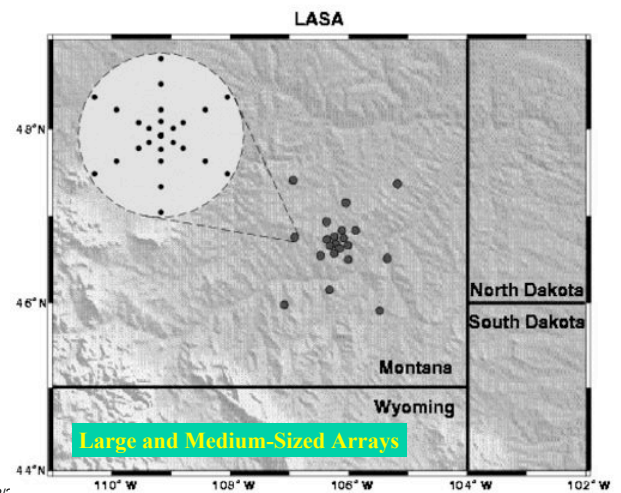
Array response function of GRF.



2/28/11

zpeng Seismology II

35



2/28/11

36

Small Arrays

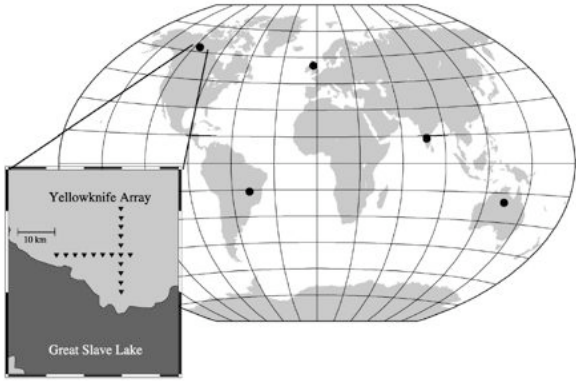
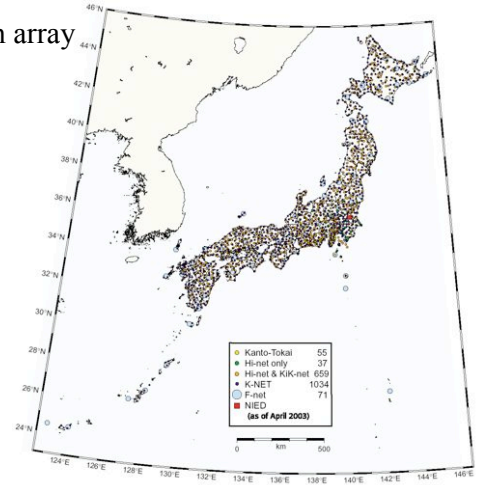


Figure 21. Location of the U.K. Atomic Energy Administration type of array. The arrays are EKA (Eskdalemuir, Scotland), GBA (Gauribidanur, India), WRA (Warramunga, Australia), BDF (Brasilia), and YKA (Yellowknife, Canada). The inset shows the configuration of the Canadian Yellowknife array.

Networks as an array

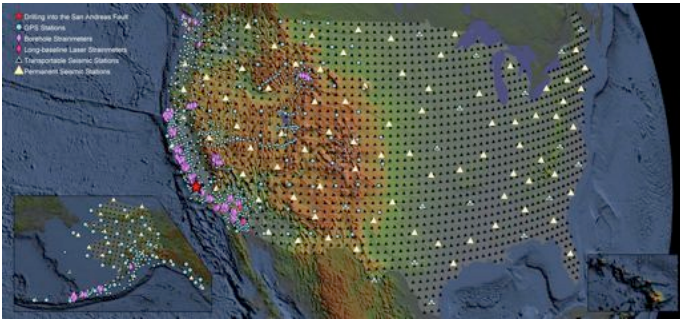


2/28/11

zpeng Seismology II

38

US Array



2/28/11

zpeng Seismology II

39

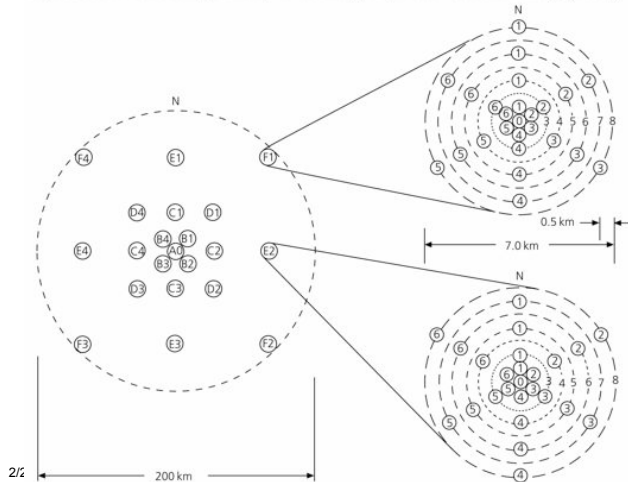


2/28/11

zpeng Seismology II

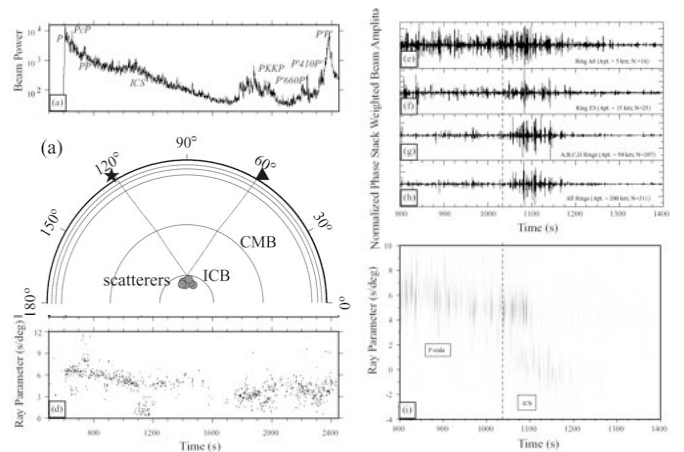
40

Figure 6.6-17: Station geometry of the Large Aperture Seismic Array (LASA).



2/28/11

41

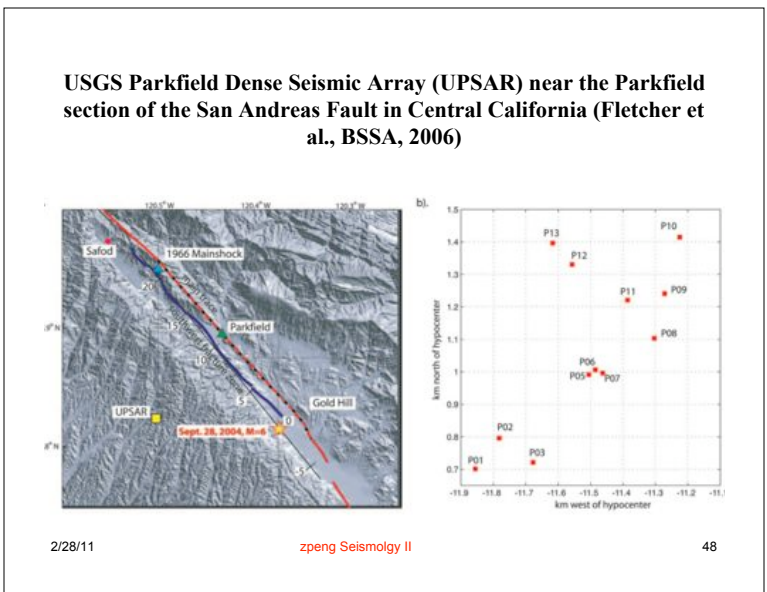
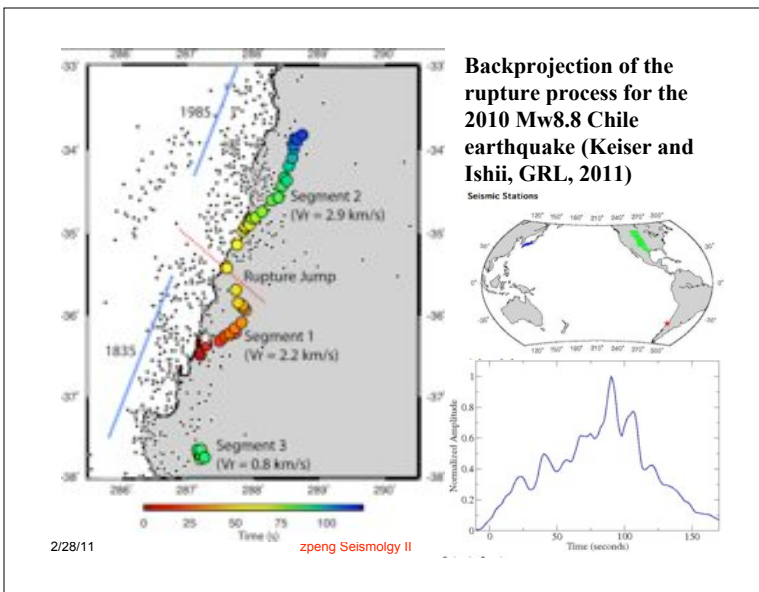
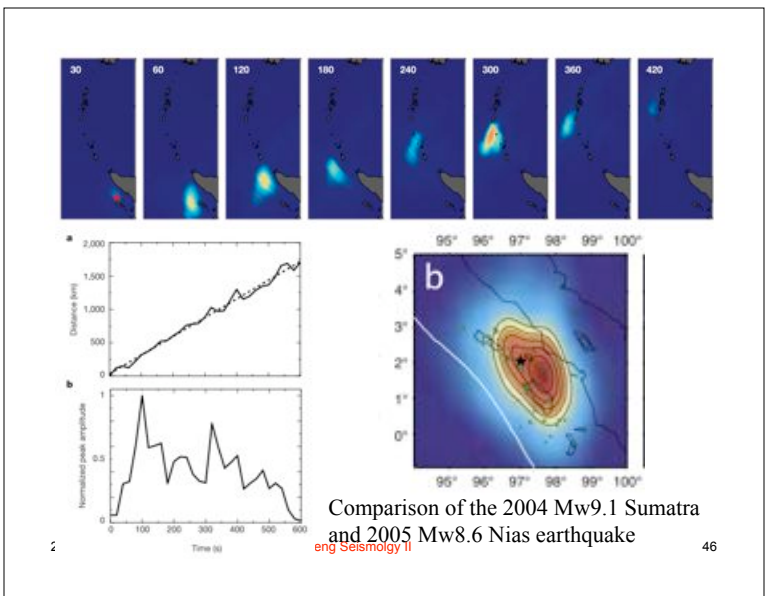
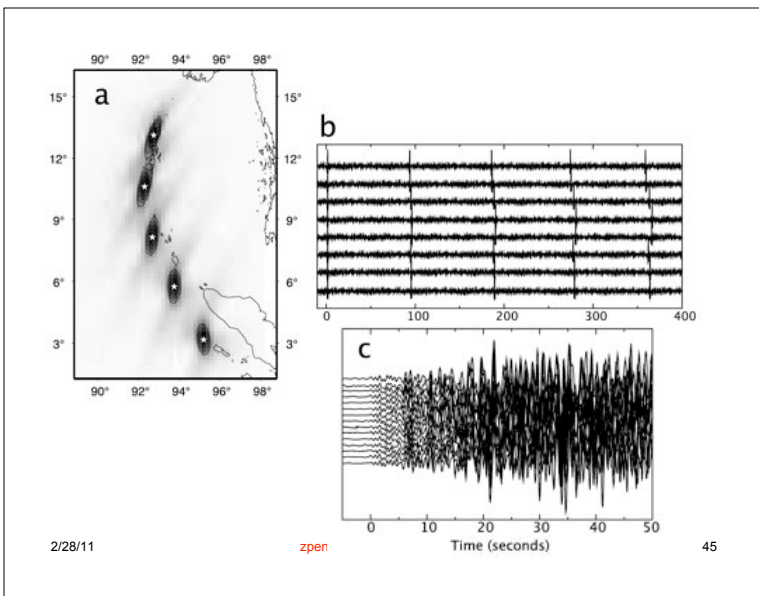
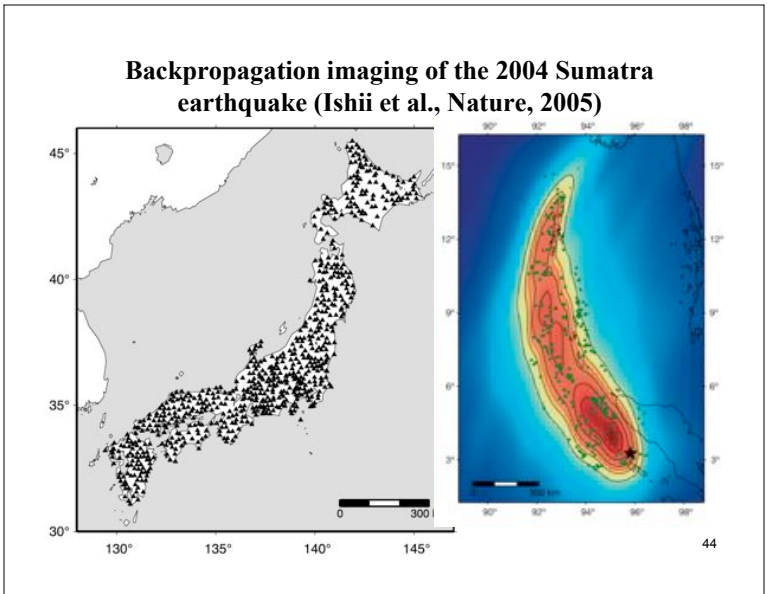
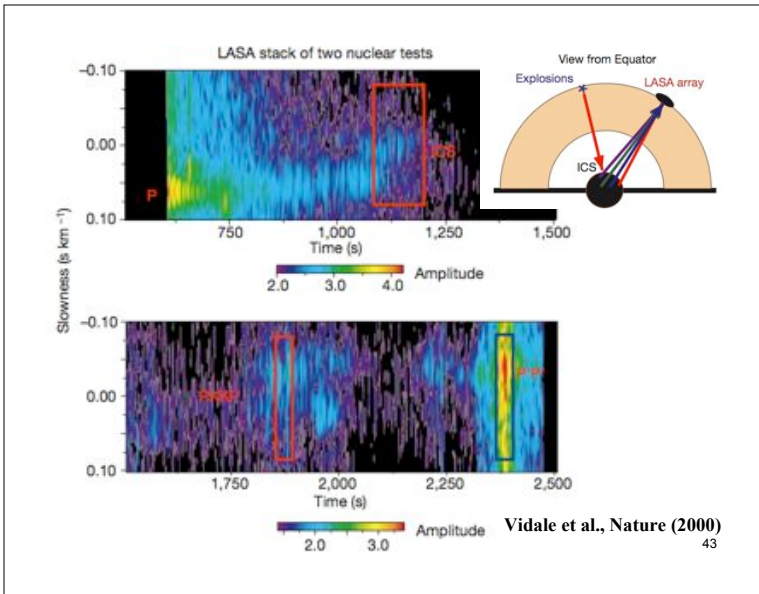


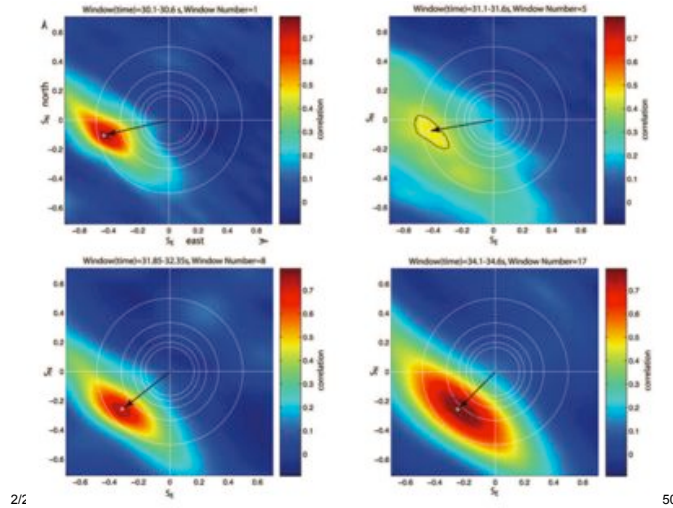
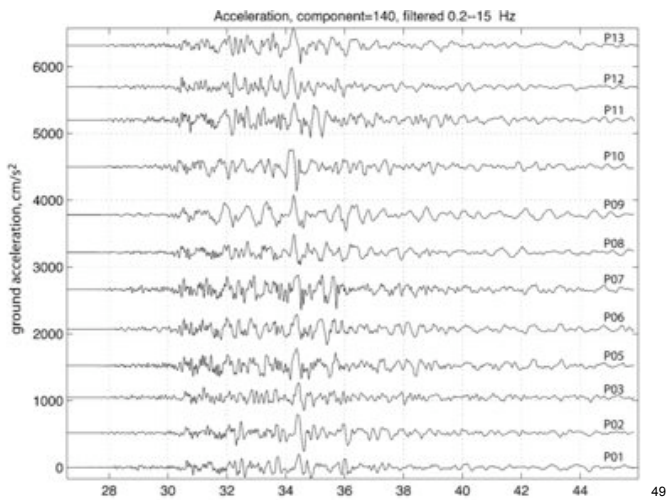
2/28/11

Peng et al. (JGR, 2008)

zpeng Seismology II

42





How to do array processing by yourself

1. Write your own matlab script (part of homework 3).
2. Use an existing software package called GAP (Generic Array Processing) written by Prof. Keith Koper (SLU, now at Univ. Utah)
3. Source code and example
http://geophysics.eas.gatech.edu/people/zpeng/Software/GAP_koper_linux_all.tar.gz
4. Manual
http://geophysics.eas.gatech.edu/people/zpeng/Software/GAP_manual.pdf

This Time

- Data management and basic data processing tools
- Systematic and random errors
- Waveform stacking
- Array analysis

• Further reading lists:

- Rost, S., and C. Thomas (2002), Array seismology: Methods and applications, Rev. Geophys., 40(3), 1008, doi:10.1029/2000RG000100.
- http://geophysics.eas.gatech.edu/internal/papers/2002/Rost/Rost_Thomas_RG_2002.pdf
- S. Rost and E.J. Garnero (2004), Array seismology advances Earth interior research, EOS, 85, 301, 305-306.
- http://geophysics.eas.gatech.edu/internal/papers/2004/Rost/Rost_Garnero_EOS_2004.pdf